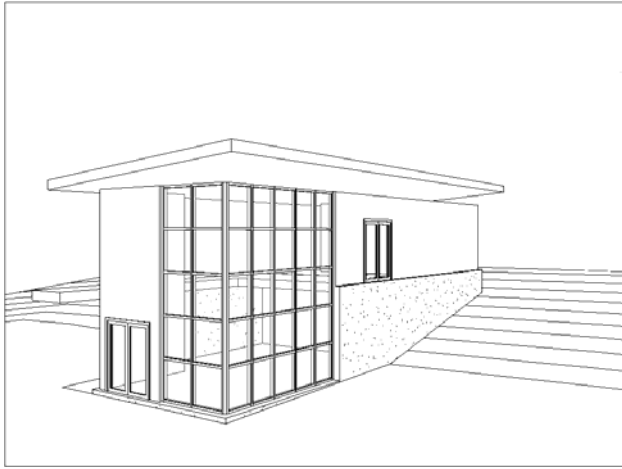


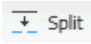
Adding a Curtain Wall

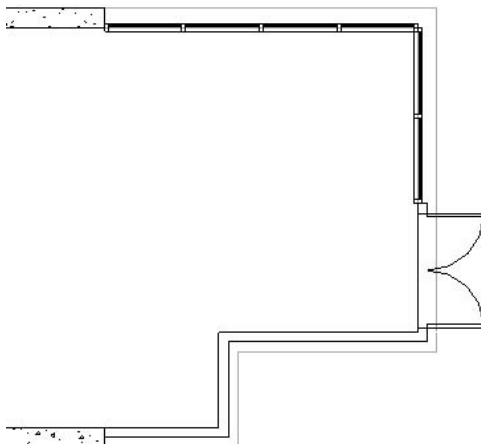
In this exercise, you change existing exterior walls to curtain walls. You then create a curtain wall type that you can apply to other walls using the Match Type tool.



1 Open the 01 Lower Level floor plan.

2 Create a curtain wall at the northeast corner of the building:


- Zoom to the east wall.
- Click Modify tab ► Edit panel ►  Split (Split), and split the east wall just above the door.
- On the Modify tab, click Modify.
- While pressing Ctrl, select the upper portion of the east wall and the adjacent portion of the north wall.
- Click Element panel ► Change Element Type drop-down and select Curtain Wall : Storefront. If a warning displays, click to close it.



3 Create a curtain wall type:

- Select the north curtain wall at an end so the whole curtain wall is selected. The tooltip and the status bar will confirm the selection.
- Click Element panel ► click Element Properties drop-down menu ► Type Properties.
- In the Type Properties dialog box, click Duplicate.
- In the Name dialog box, for Name, enter House 4' x 4' [House 1200 x 1200 mm], and click OK.
- In the Type Properties dialog box, under Vertical Grid Pattern, for Spacing, enter 4' [1200 mm].
- Under Horizontal Grid Pattern, for Spacing, enter 4' [1200 mm].
- Click OK twice.

4 Match the type of the north curtain wall to the east curtain wall:

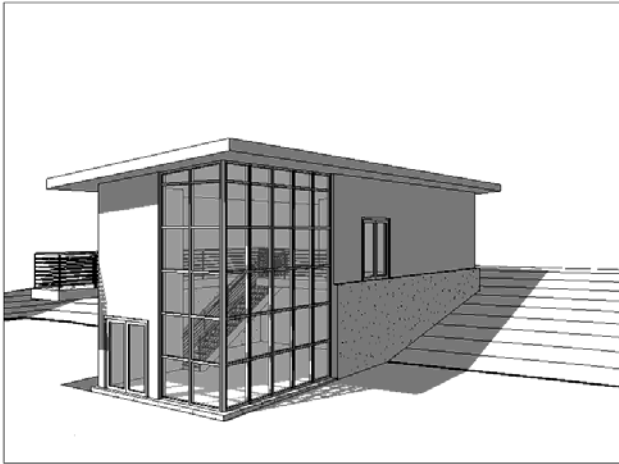
- Click Modify tab ► Clipboard panel ►  Match Type (Match Type).
- Select the north curtain wall, and then select the east curtain wall.

5 Open the To Building 3D view. The new spacing is applied to both curtain walls.

6 Save the project file.

Attaching Walls to the Roof

In this exercise, you attach interior and exterior walls to the roof. When you attach the curtain walls, Autodesk Revit Architecture warns you of consequences and modifies the placement of mullions.



1 Open the 03 Roof floor plan.

2 Attach the basic walls:

- While pressing Ctrl, select all the interior walls and exterior walls, except the curtain walls.
- Click **Modify Walls** tab ► **Modify Wall** panel ► **Attach**.
- In the Options Bar, for **Attach Wall**, verify **Top** is selected.
- In the drawing area, select the roof.
- Press Esc to end the command.

3 Attach the curtain walls:

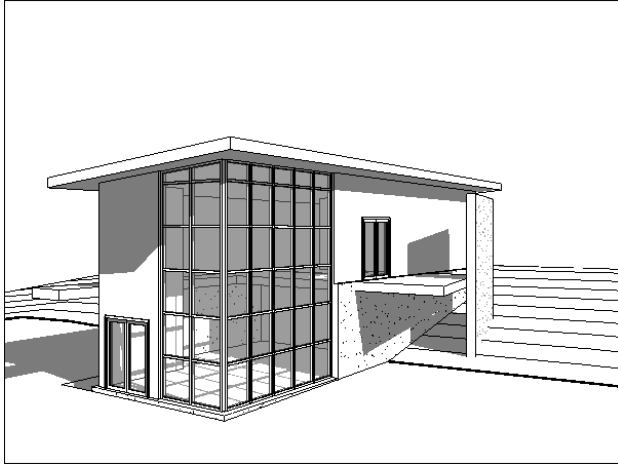
- Open the North elevation view.
- Move the cursor over the curtain wall, and press Tab until the status bar indicates that the curtain wall is selected, select the outside edge of the curtain wall, and then on the **Modify Walls** tab, at the **Modify** panel, click **Attach**.
- Select the roof.
- In the Error dialog box about curtain wall mullions, click **Delete Elements**.
- Open the East elevation view, and attach the east curtain wall to the roof.

4 Open the To Building 3D view.

5 On the View Control Bar, click **Shadows Off** ► **Shadows On**. All walls extend up to the roof. Note the spacing of the top row of mullions/panels; because the spacing parameter cannot be satisfied, mullions are created where the walls and roof attach.

Modifying the Entry Deck

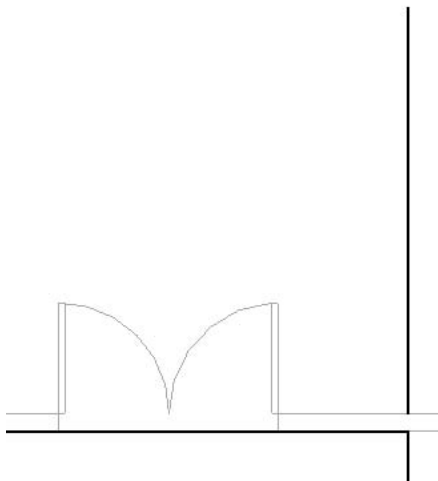
In this exercise, you modify the floor profile on the entry level to include a deck on the north side of the model.



1 Open the 02 Entry Level floor plan.

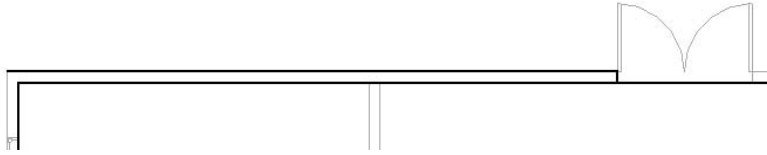
2 Edit the profile of the floor:

- Select the floor. Hover over the wall and use press Tab two times to select the floor.
- Click Modify Floors tab ► Edit panel ► Edit Boundary.
- On the Draw Panel, click Boundary Line. On the north side of the model, click on the north wall in line with the right vertical sketch line, move the cursor up 11' [3300 mm], and click to place the endpoint of the line.

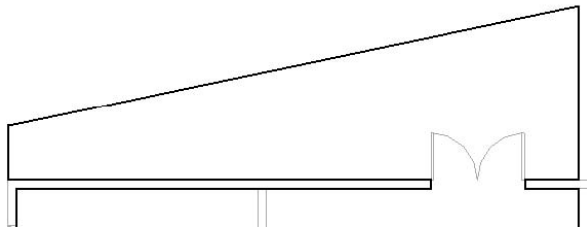


- Press Esc to finish this line.
- On the Options Bar, select Chain.

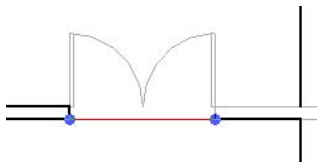
- At the intersection of the double door and the north wall draw a sketch line from the interior intersection up 6" [200 mm] north and then west to the end of the northern wall along the exterior side.



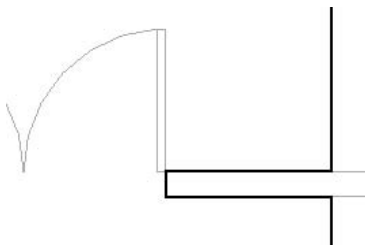
- Continue drawing a line from the left endpoint of the north wall and extending up 3' 6" [1000 mm].
- Connect the line with the upper endpoint of the 11' [3000 mm] vertical line drawn previously.



- Click Edit Boundary tab > Edit panel >  (Split), and split the north model line at both sides of the door opening.



- On the Edit Boundary tab, click Modify.
- Select the segment at the door opening, and press Delete.
- Click Edit Boundary tab > Draw panel > Boundary Line, and complete the profile to the right of the door, as shown. Press Esc to exit the command.

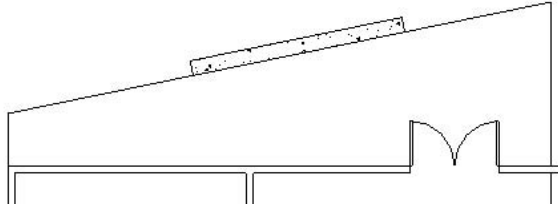


- On the Floor panel, click Finish Floor.

- In the Alert dialog box, click No.

3 Add a wall to the entry deck:

- Click Home tab ► Build panel ► Wall.
- Click Place Wall tab ► Element panel ► Change Element Type drop-down and select Basic Wall : Retaining - 12" Concrete [Basic Wall : Retaining 300mm Concrete].
- On the Options Bar, for Location Line, select Core Face: Interior.
- Draw a wall from left to right on the slanted floor line, as shown and press Esc to exit the command.



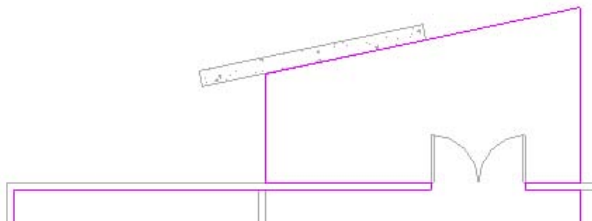
- Select the wall previously created.



- Click Modify Walls tab ► Element panel ► (Element Properties).
- In the Element Properties dialog box, under Constraints, for Base Constraint, select 00 Foundation, and click OK.

4 Modify the floor:

- In the drawing area, select the floor.
- Click Modify Floors tab ► Edit panel ► Edit Boundary.
- Select the short vertical line above the west wall, and drag it to the right, as shown.



- Click Modify Floors > Edit Boundary tab ► Floor panel ► Finish Floor.
- In the Alert dialog, click No.

5 Open the To Building 3D view.

6 Save the project file.